

mafell
creating excellence



High-performance Cordless Jig Saw

PS 2-18

High-performance cordless jig saw PS 2-18: Power and precision at every turn.

STABILITY FOR MAXIMUM PRECISION



With its low center of gravity and exceptionally stable and broad baseplate, the PS 2-18 rests squarely and securely work piece and thus ensures maximum precision.

PERFECT WITH THE GUIDE RAIL



Whenever perfectly straight guided cuts are required, the PS 2-18 can be operated together with the guide rail system F.

ERGO-BALANCE PRINCIPLE

The ergo-balance principle is all about the user.

BETTER BALANCE

Among the ergonomic design elements underpinning the ergo-balance principle are soft non-slip surfaces and careful weight distribution. In consequence, the PS 2-18 is easy to hold and control even in awkward situations.

ENHANCED SAFETY

Thanks to its broad baseplate and low center of gravity, the PS 2-18 rests securely and squarely work piece – in order to achieve maximum precision.

MORE CONTROL

Protrusions or interfering edges? Not with the PS 2-18. When setting up the machine, it can be placed or rested on any surface without risk of damage to either the work or the saw. Utmost clarity is provided by red controls and two wide-beam LED lamps – for brilliant illumination without casting an inconvenient shadow.



Limits exist in order to be overcome. The powerful rechargeable drive system of the high-performance jig saw PS 2-18 not only expands its operating range but also offers uncompromising precision, output and convenience. It delivers all the benefits of the MAFELL jig saw concept while raising the bar even higher with the ergo-balance principle and smart light management. For all those who measure their work against the highest standards.

CUnex W1 SAWBLADE



The twin-layer **CUnex W1** blade has a wedge-shaped cross section that facilitates freehand sawing while offering the greatest possible sawblade stability. The outcomes are unequalled precision and perfectly square cuts.

SAWBLADE CLAMP



The patented clamping system holds the sawblade absolutely secure without the need for additional jaws or rollers. Deformed sawblades are a thing of the past. Thanks to ideal positioning of the locking lever, the sawblade can also be changed quickly and easily.

Ever ready for every task: the PS 2-18.

PRECISE BEVEL CUTS

The separate tilting baseplate allows absolutely precise bevel cuts within the range of $\pm 45^\circ$.

It couldn't be simpler:

Unlock the quick release and detach the regular baseplate, then attach and lock the tilting baseplate. Select and lock the angle setting, then operate the saw. If you need to cut the opposite angle, simply turn the baseplate by 180° .



FOUR-FUNCTION PARALLEL FENCE

One accessory, multiple applications: the parallel fence not only ensures straight cuts, but can also provide extra stability when sawing close to the edge. Its all-round capabilities are revealed when used as a guide rail adapter in combination with the guide rail system F. Depending on whether the red cover is facing up or down, the saw can be operated on or along the edge of the rail.



Parallel fence



Auxiliary rest/extra stability



Guide rail adapter



Compass saw functionality (50 mm - 210 mm radius)



With its diverse range of special accessories, the PS 2-18 is the tool of choice in virtually every situation. A clear practical advantage lies in its smart single accessory that offers the functionality of circle cutting, parallel fence and guide rail adapter.

SAWING WITH THE GUIDE RAIL



Perfectly straight cuts can be executed with the aid of the guide rail.

It couldn't be simpler:

The PS 2-18 can be operated along the edge of the guide rail, with the groove located on the rail (to protect the work surface), or on the rail using the adapter. This allows recesses to be cut in worktops, for example, with just a single saw.



COMPASS SAW

The PS 2-18 effortlessly saws radii for 68 mm (2 41/64 inch) cavity sockets or recessed spotlights.

It couldn't be simpler:

First drill two 8 mm (5/16 inch) holes spaced 34 mm (1 11/32 inch) apart. Next insert the compass pin in the baseplate and then the **CUnex W1** sawblade and the pin in the holes, and cut out the circle – job done!



REVERSE SAWING

Sawing with the blade reversed provides a larger contact area, which gives extra stability from the start of the cut – and makes working near edges much easier.

It couldn't be simpler:

Release and remove the sawblade, turn it and reinsert it – job done! Irrespective of the sawing direction, therefore, the PS 2-18 is always very easy to use.



A top performer. Highlights of the PS 2-18 at a glance.

SOLID BLADE SHAFT BEARING

The solid construction of all components makes certain of a long service life with undiminished performance.

PERFECT VIEW OF SAWBLADE

The PS 2-18 is designed to give the best possible view of the sawblade.



CUmax SAWBLADE CLAMPING SYSTEM

At the heart of the PS 2-18 is the patented **CUMax** sawblade clamp. By holding the sawblade securely in place, it is a crucial factor in the machine's unequalled precision. The pendulum action system integrated in the gear unit operates without jaws or rollers alongside the blade. As a result, there is no longer any friction-induced heat capable of discoloring and deforming the sawblade.

How it works: A spring (**green**) exerts a vertical force by way of the shaft bushing (**red**), in which the sawblade (**yellow**) is positively secured. The bushing opens or is released when the clamp is turned.

SMART TEAR PROTECTION

A nick can be cut in the toughened splinter guard with pointer to customize it for the individual sawblade. This provides the best possible solution to ensure virtually tear-free cuts.



From the innovative CUMax sawblade clamping system to the extremely powerful drive, the PS 2-18 is built to execute perfectly square cuts - no matter what the application.

TOOL-LESS BLADE CHANGES

Changing the sawblade is a cinch. Simply operate the conveniently positioned clamping lever to remove or fasten the blade.



SMART LIGHTING



Two high-quality LEDs provide the best possible view of work piece. To avoid reflection when sawing underneath the work, the lighting switches itself off. The next time the saw is used on top of the bench, the smart lighting comes back on. Tapping three times on the front of the saw toggles between the lighting modes.

INNOVATIVE DUST EXTRACTION

Thanks to the venturi effect, the vacuum channel integrated in the baseplate ensures outstanding dust extraction directly alongside the sawblade. The mark is kept free by blowing from one side and extracting the dust on the other. The workplace therefore remains clean and the mark visible, even when a dust extractor is not connected.

STABLE BASEPLATE



By way of a quick-release mechanism, the baseplate always remains fastened to the saw at an exact right angle. The large contact area of the PS 2-18 provides consistent stability and makes it easier to work close to corners and edges.

ERGO-BALANCE PRINCIPLE



Thanks to its ergonomic design, soft non-slip surfaces and smart weight distribution, the PS 2-18 is easy to control and comfortable to hold even in awkward situations. The broad baseplate and low center of gravity enable the PS 2-18 to rest securely and always squarely on the work.

Technical data and accessories.



High-performance cordless jig saw PS 2-18

Technical data	Battery voltage	18 V
	No-load strokes/minute	750– 3.100 1/min
	Length of stroke	26 mm (1 1/32 inch)
	Weight	2,2 kg (4.85 lbs)

Order No. 91C101 | High-performance cordless jig saw PS 2-18 in MAX 3 case

Delivery scope	2 battery PowerTanks 18 M 72 LiHD	1 hose connector P-AS
	1 battery PowerStation APS M, 18V	1 hose connector extension
	3 jig saw blades CUnex W1; W2; W7	1 chip deflector P-SA
	1 parallel fence P-PA	5 splinter guards P-SS
	1 baseplate P-GP	1 glider P-G

Order No. 91C102 | High-performance cordless jig saw PS 2-18 "PURE" in MAX 3 case

Delivery scope	3 jig saw blades CUnex W1; W2; W7	1 hose connector P-AS
	1 parallel fence P-PA	1 hose connector extension
	1 baseplate P-GP	1 chip deflector P-SA
		5 splinter guards P-SS
		1 glider P-G



MAFELL MAX 3

Every project comes with its own challenges, which is fine as long as you're well prepared. Whether wood, laminate, plastic, metal, plasterboard, Trespa panels or Eternit fiber-cement board, the MAFELL special accessories for the PS 2-18 always deliver a perfect cut.



Guide rail F

Designation	Length	Order No.
F 80	0.80m (2,6 ft.)	204380
F 110	1.10m (3,6 ft.)	204381
F 160	1.60m (5,3 ft.)	204365
F 210	2.10m (6,9 ft.)	204382
F 310	3.10m (10,2 ft.)	204383



Guide rail bag

Guide rail bag TZ-FST1600
for guide rails up to 1.6 m (5,3 ft.) long

Order No. **095257**

Guide rail set with bag
2 x F 160 + F-VS + 2 x F-SZ 100MM + guide rail bag

Order No. **209592**

Guide rail set with bag
F 80 + F 160 + F-WA + F-VS + 2 x F-SZ 100MM + guide rail bag

Order No. **209591**



Suction clamping system

Aerofix F-AF 1

1.3 m (4,3 ft.) rail, top and bottom adapters, flexible hose

Order No. **204770**

Flexible hose FXS L

up to 3.2 m (10,5 ft.) length

Order No. **205276**



Angle fence F-WA

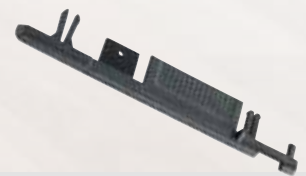
Order No. **205357**



Connector F-VS

for joining two guide rails

Order No. **204363**



End caps F-EK

2 caps

Order No. **205400**



Splinter guard F-SS 3,4M

3.4 m (11,2 ft.) long

Order No. **204375**



Non-slip profile F-HP 6,8M

6.8 m (22,3 ft.) long

Order No. **204376**



Lever clamp F-SZC 180

2 pieces, for fixing guide rail to workpiece

Order No. **093868**



Battery PowerStation

Battery PowerStation APS M, 18V
Order No. **094492**

High-speed charger APS M+
Order No. **094509**



Battery PowerStation

18 M 72 LiHDX, Li-Ion, 18V, 72 Wh
Order No. **094523**

18 M 144 LiHDX, Li-Ion, 18V, 144 Wh
Order No. **094520**



Battery PowerStation

18 M 72 LiHD
Li-Ion, 18 V, 72 Wh
Order No. **094500**



Battery PowerStation

18 M 99 LiHD
Li-Ion, 18 V, 99 Wh
Order No. **094503**



Battery PowerStation

18 M 144 LiHD
Li-Ion, 18 V, 144 Wh
Order No. **094498**

Accessories and blades.



Power-Set 1

2x 18 M 72 LiHD + APS M

Order No. **209596**



Power-Set 2

2x 18 M 99 LiHD + APS M

Order No. **209599**



Power-Set 3

2x 18 M 144 LiHD + APS M+

Order No. **209598**



Power-Set 4

2 x 18 M 144 LiHDX + APS M+

Order No. **212615**



Power-Set 5

4x 18 M 99 LiHD + 2x APS M+
in MAX3

Order No. **209633**



Assortment SSB-SET3

4 x SSB-W2, SSB-W5,
SSB-W7, SSB-W8
2 x **CUnex** SSB-W1

Order No. **093866**



Splinter guard P-SS

5 guards

Order No. **205447**



Tilting baseplate P-SP

Tilts up to 45°

Order No. **205446**



Parallel fence P-PA

4-function attachment,
including for cutting circles

Order No. **205448**

Sawblade range for the PS 2-18.

Designation/properties

CUnex SSB-W1 Order No. 093838



precise · straight · fast · curves · 90° · rail · long life

SSB-W2 Order No. 093840



coarse · straight · fast · plunge · 90°

SSB-W3 Order No. 093842



coarse · straight · fast

SSB-W5 Order No. 093844



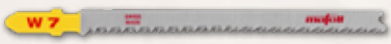
clean · straight · fast · plunge

SSB-W6 Order No. 093846



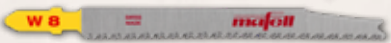
fine · clean · straight · plunge · reverse

SSB-W7 Order No. 093848



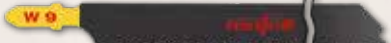
fine · clean · tear-free both sides · curves · plunge

SSB-W8 Order No. 093850



fine · clean · tear-free both sides · straight · plunge

SSB-W9 Order No. 093864



precise · straight · deep

SSB-WP2 Order No. 093852



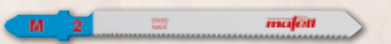
fine · clean · straight · plunge

SSB-L2 Order No. 093854



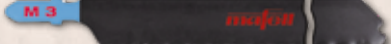
fine · clean · straight · plunge · long life

SSB-M2 Order No. 093856



fine · clean · straight · long life

SSB-M3 Order No. 093862



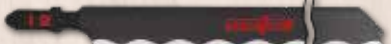
precise · clean · deep · long life

SSB-EF2 Order No. 093858



coarse · long life

SSB-I2 Order No. 093860



precise · clean · deep

Body thickness (mm)	Cutting blade length (mm)	Pitch (mm)	Cutting depth (mm)	Qty. in pack	Solid wood	Plain boards	Laminated boards (particle board, battenboard)	Laminates, parquet	Soft fiber gypsum boards	Melamine resin board (e.g. Formacell)	Fiber-cement panels (Frespa, Resopal)	Soft plastics	Acrylic (e.g. Plexiglas)	Fiber-reinforced plastics	Non-ferrous metals/copper alloys	Aluminium	Aluminum composite panels	Metal sandwich	Insulating materials
3.0	75	4.0	≤64	2	X	X													
1.7	75	4.0	≤64	5	X	X													
1.7	125	4.0	≤114	5	X	X													
1.5	90	2-3	79	5	X	X	X												
1.5	75	2.5	≤64	5	X	X	X												
1.5	95	2.2	≤64	5	X	X	X												
1.5	95	2.2	≤64	5	X	X	X												
1.6	220	4.0	≤190	3	X														X
1.5	75	2.7	≤64	5	X	X	X		X		X	X							
1.3	60	1.7	≤15	5				X											
1.0	55	1.1-12	≤3	5											X	X	X		
1.6	220	1.1	≤200	3											X	X	X	X	
1.2	75	4.3	≤4	1					X	X		X							
1.6	220	1.1	≤200	3															X

In order to develop a better tool for carpenters, we at MAFELL often take a special approach: We change our point of view and completely reconceive the tool in essential parts. At the same time, we always keep in mind the future requirements of the woodworking trade.

From this way of thinking, paired with an outstanding material and processing quality, amazing solutions emerge again and again. For example, in terms of functionality and ease of use. It is our claim that you no longer have to think about your tools when doing your work. Simply because we at MAFELL have already done so extensively. After all, we have a common goal: the perfect job. Or in brief:

creating excellence

Your MAFELL authorized dealer:



MAFELL AG · Beffendorfer Straße 4 · 78727 Oberndorf · Germany
Telefon +49 7423 812-114 · E-Mail export@mafell.de · www.mafell.com